

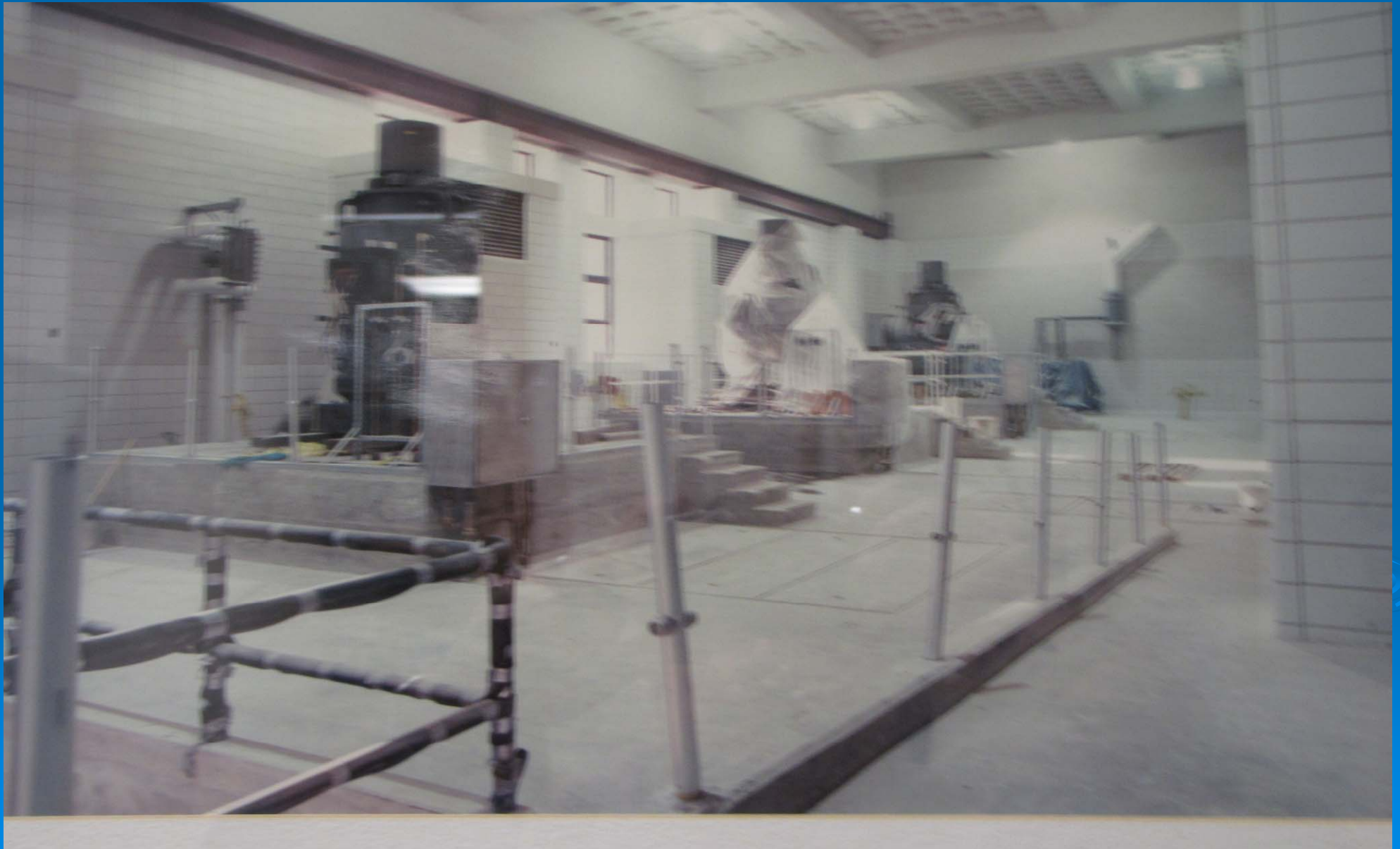
DuPage Pumping Station



DuPage Pumping Station



DuPage Pumping Station



Operational Information

- Commission is the second largest water system in the State of Illinois
- The DuPage Water Commission is the sole source of Lake Michigan water inside DuPage County
- The Commission purchases finished water from the City of Chicago and wholesales it to the communities located inside DuPage County
- DuPage Pumping Station has a capacity of 185 MGD
- Average Day Demand is 87 MGD
- Responsible for water to 750,000 people

Historical Record Pumpage

Lexington Pump Station		DuPage Pump Station			
Date	Flow Rate MGD	Date	Flow Rate MGD	Date	Total Flow MG
7/22/02	215.70	7/17/05	185.90	7/18/05	159.09
7/16/05	208.10	7/16/05	184.55	6/24/05	157.83
6/24/05	205.12	7/10/05	184.13	6/25/05	157.23
6/29/05	203.76	7/11/05	181.81	7/17/05	156.74
7/15/05	203.7	6/25/05	181.75	7/11/05	153.81
7/11/05	202.98	6/27/05	181.75	7/16/05	153.32
6/28/05	202.90	6/23/05	180.28	6/23/05	152.91
6/23/05	202.50	6/28/05	177.78	6/28/05	151.06
6/25/05	202.12	6/26/05	176.74	6/26/05	149.53
7/16/05	201.87	6/22/05	175.40	7/14/05	149.27

Distribution System Information

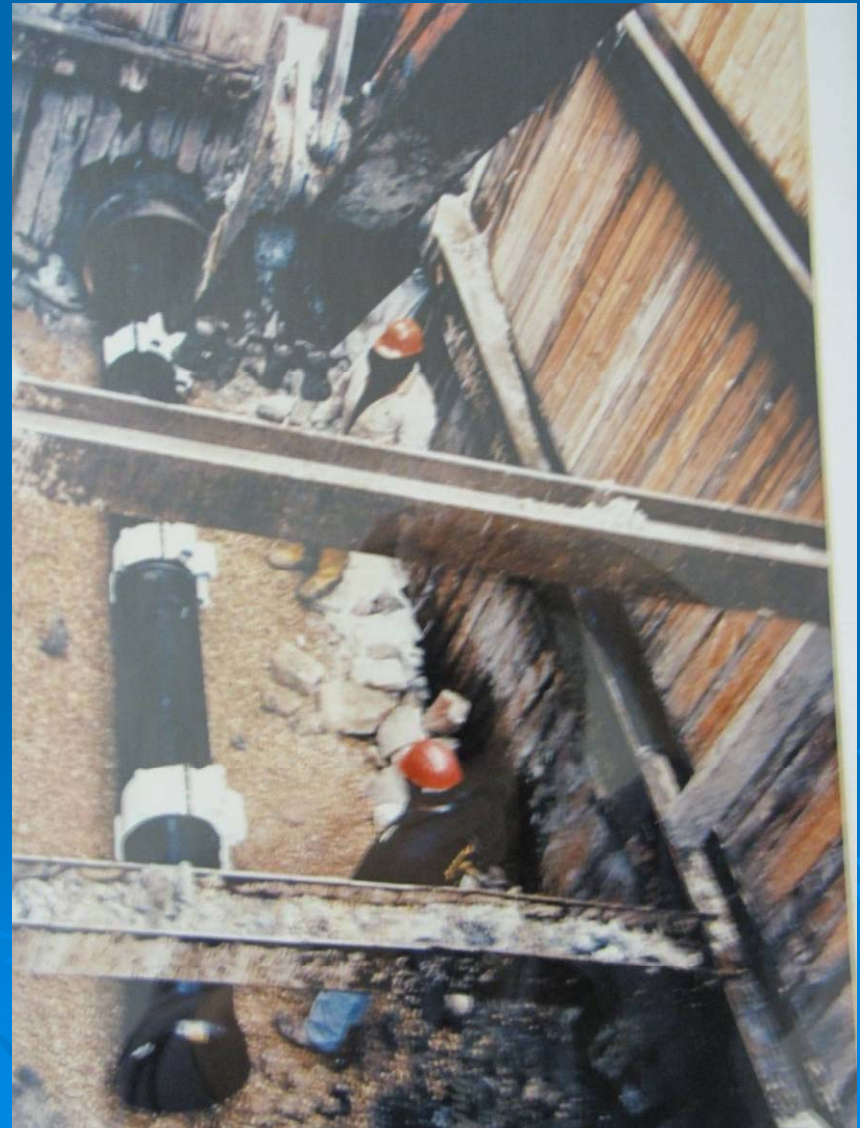
➤ General Information

- 202 miles of pipelines ranging in size from 12" to 90"
- Pipeline materials
 - Prestressed Concrete Cylinder Pipe (PCCP)
 - Ductile Iron
 - Steel Pipe
- Facilities
 - Main Line Valves - 249
 - Blow Off – 374
 - Air Release Valves – 617

Large Diameter Water Main Installation



Three Types of Water Main Installation



Remote Facilities Information

➤ Remote Facilities

- 78 Metering Station
- 34 Remotely Operated Valves
- 5 Standpipes
- 1 Remote Pump Station
- 6 Cathodic Protection Rectifiers

➤ Meter Testing Program

- 249 Meters are tested annually on site

Typical Meter Station



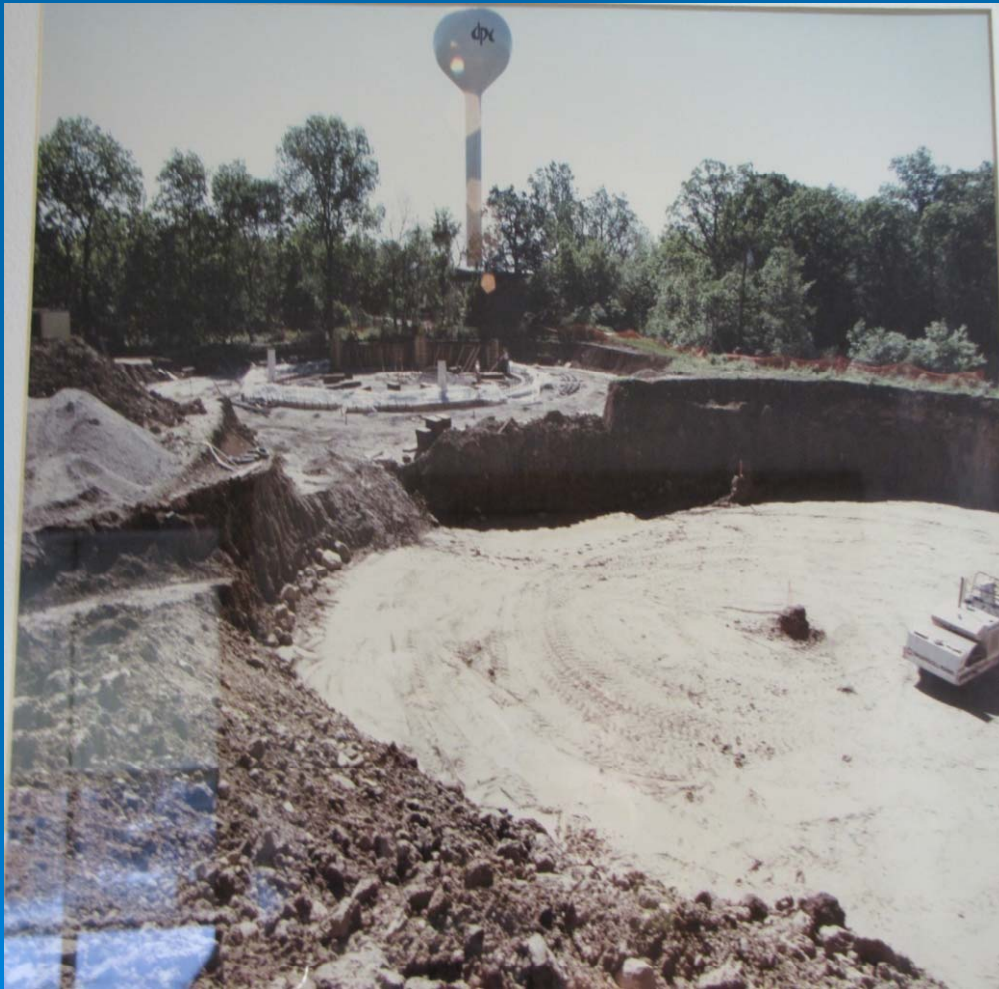
Typical Meter Station



Typical Remotely Operated Valve (ROV) Control Cabinet



Water Stand Pipe



Typical Tank Site (TS3)



Tank Site 1 Pump station

