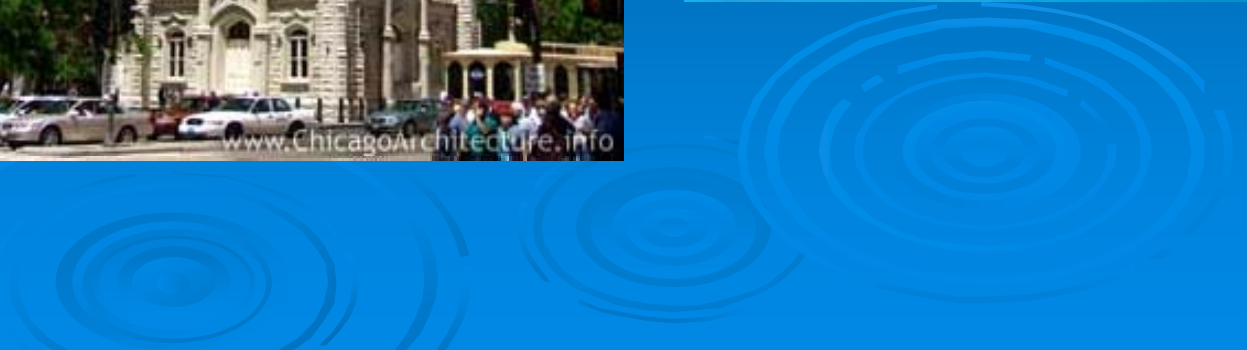
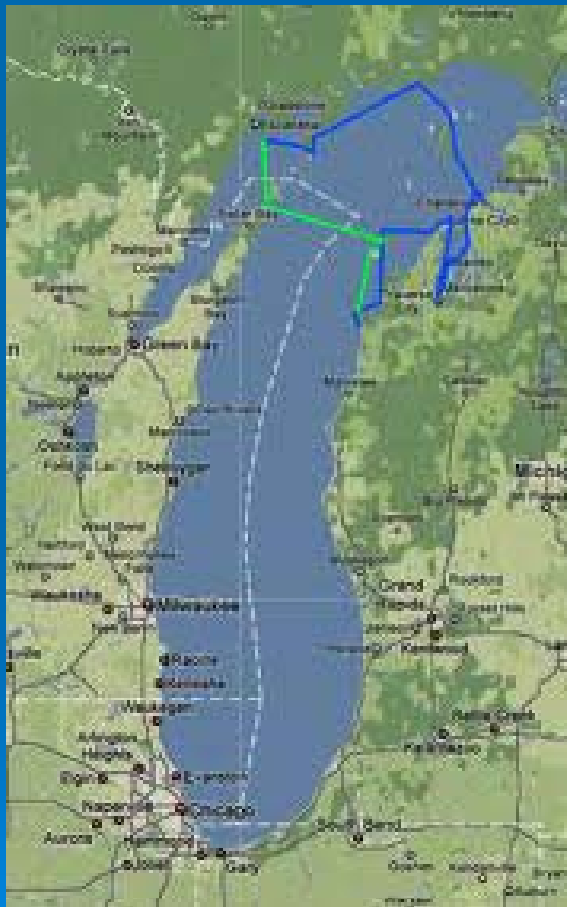


Our Water Journey

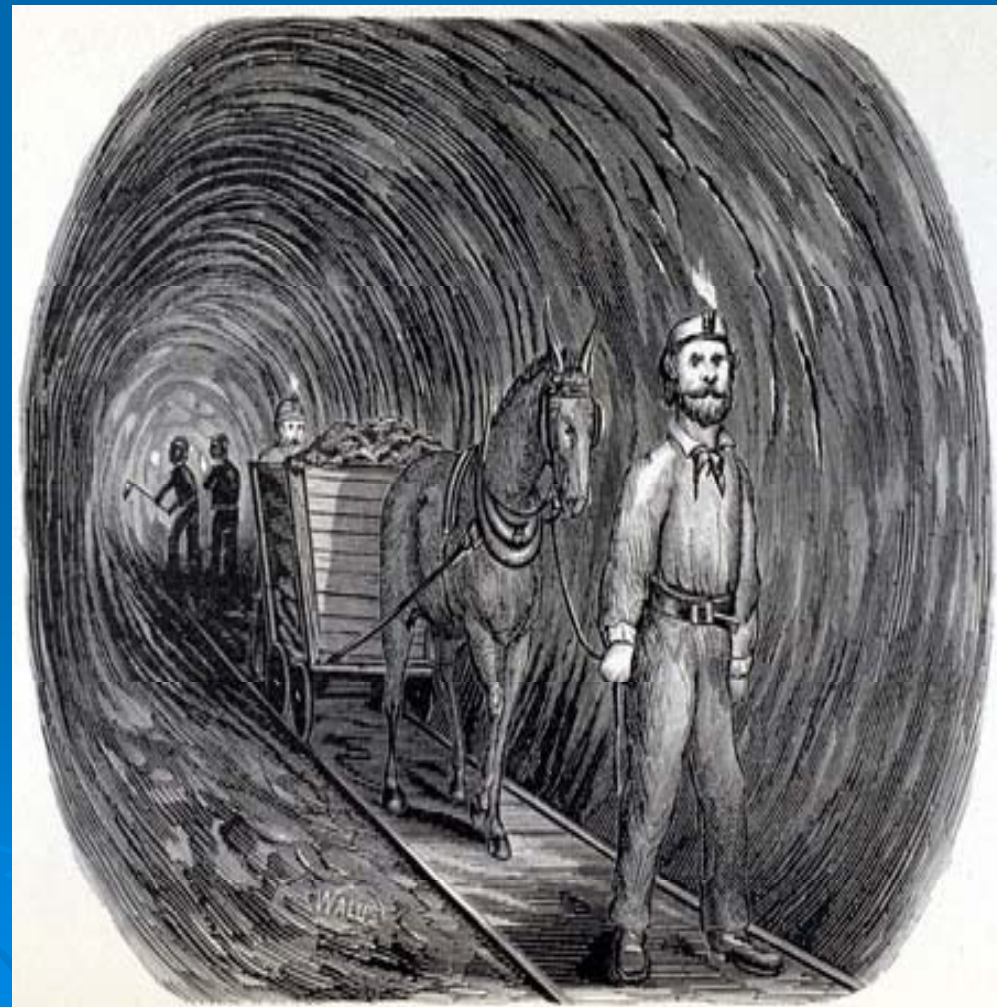
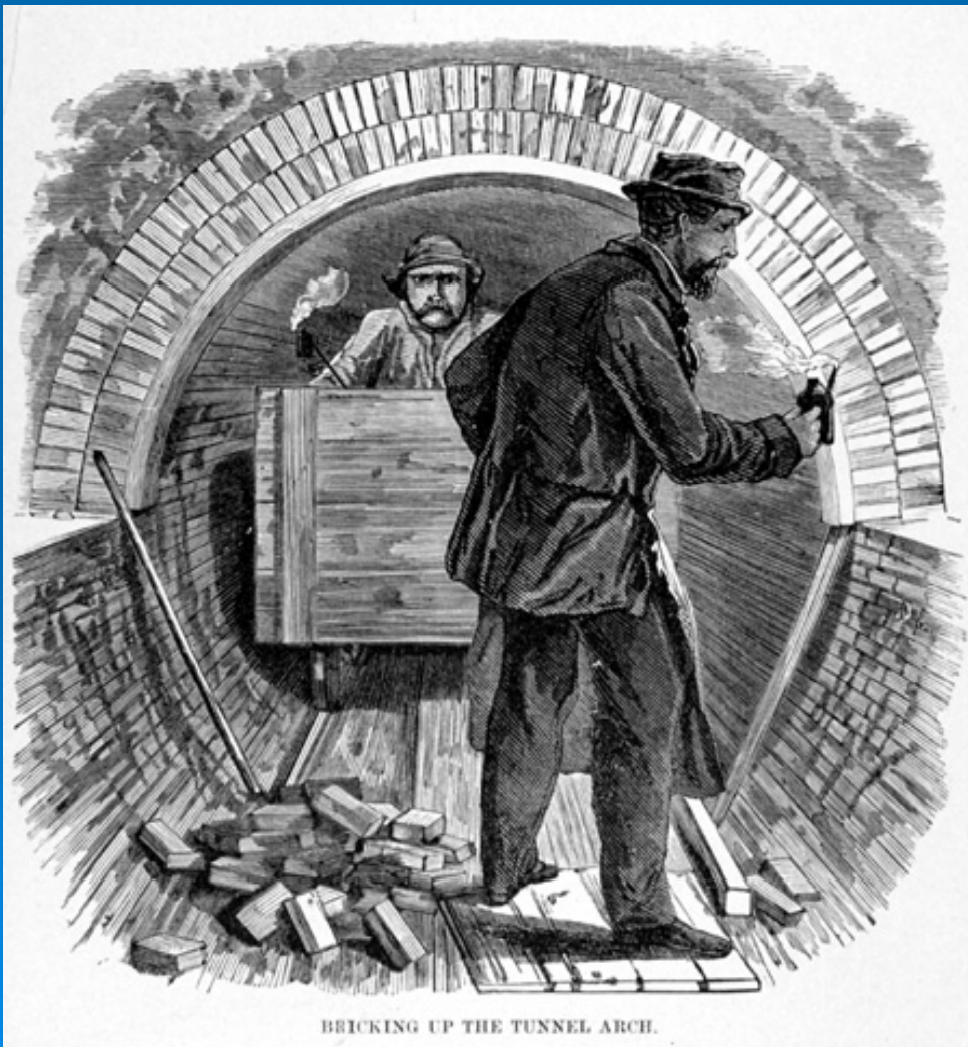


Carter Harrison / Dever Cribs



- Water from Lake Michigan enters the intake crib at depths of 20 to 30 feet.
- Water enters the purification plant's intake basin through a tunnel beneath the lake bed.

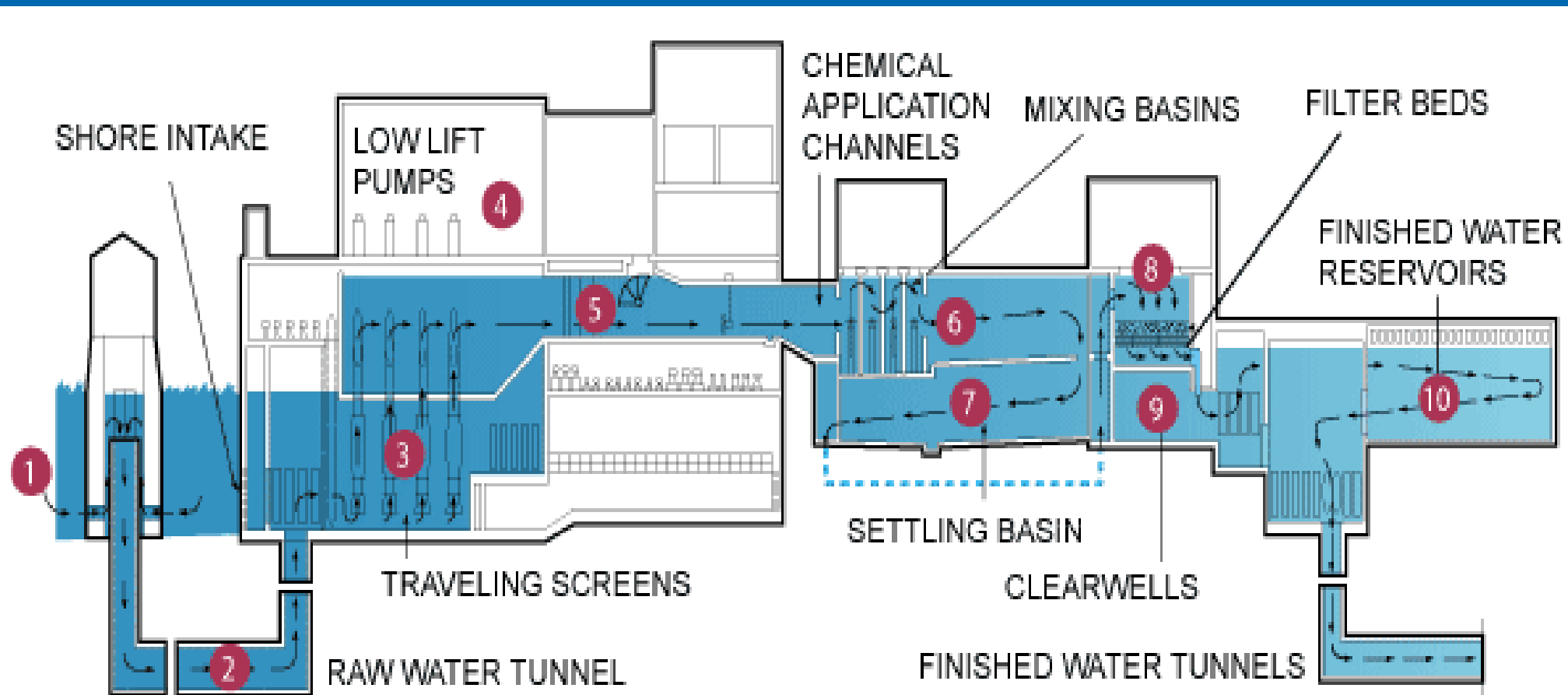
Building the Intake tunnels



James W. Jardine Water Purification Plant



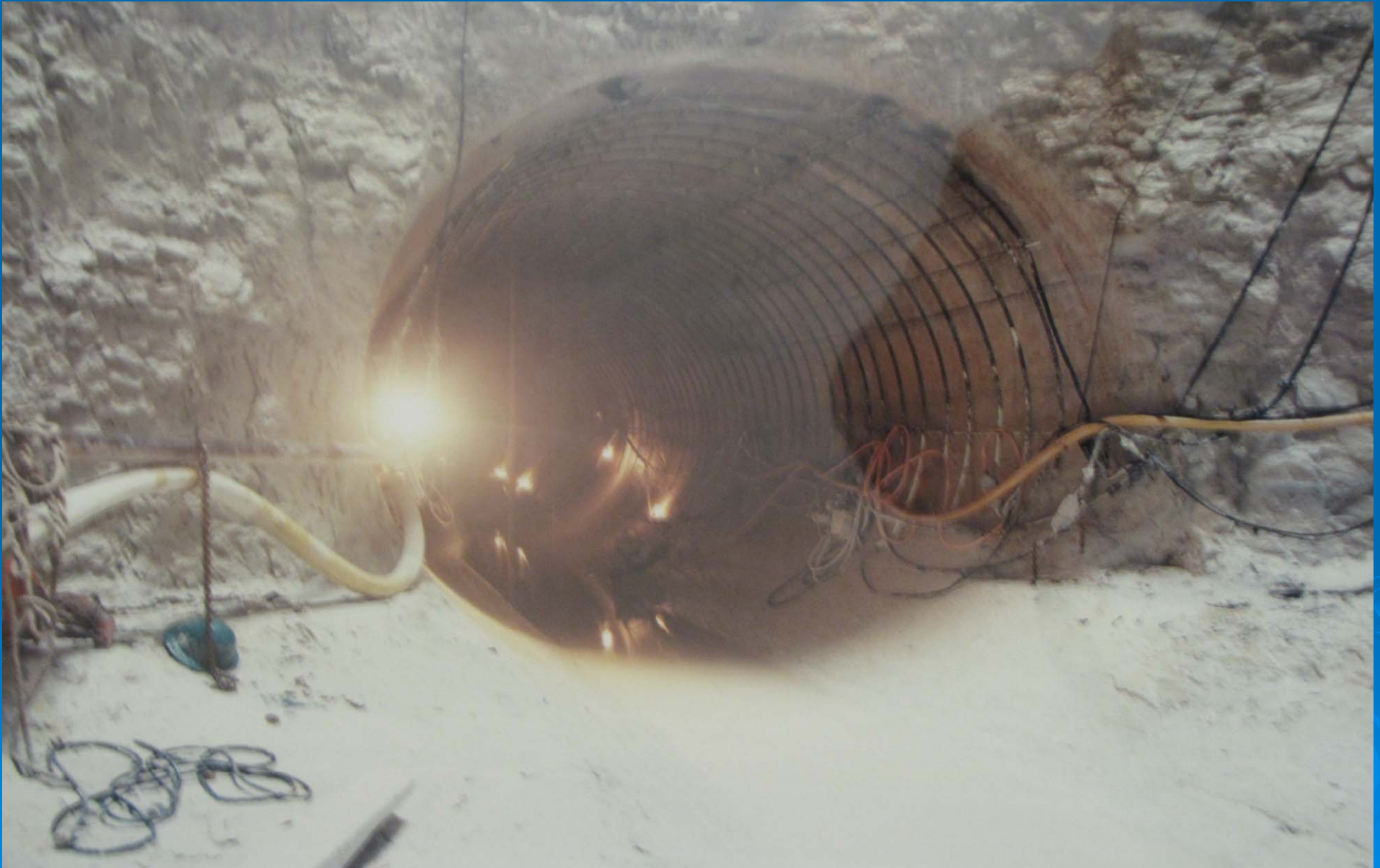
James W. Jardine Water Purification Plant



Tunnel Boring Machine



12 foot Diameter Tunnel



12 foot Diameter Tunnel



Lexington Pumping Station



Lexington Pumping Station



Lexington Pumping Station



Lexington Pumping Station



Lexington Pumping Station



90" Transmission Main Installation



Des Plaines River Crossing



90" Transmission Main Installation

